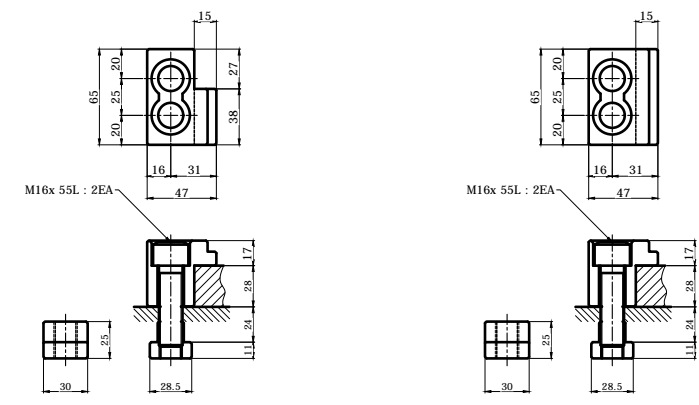
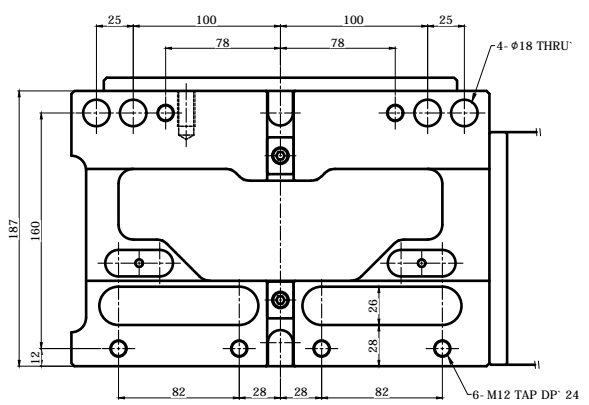
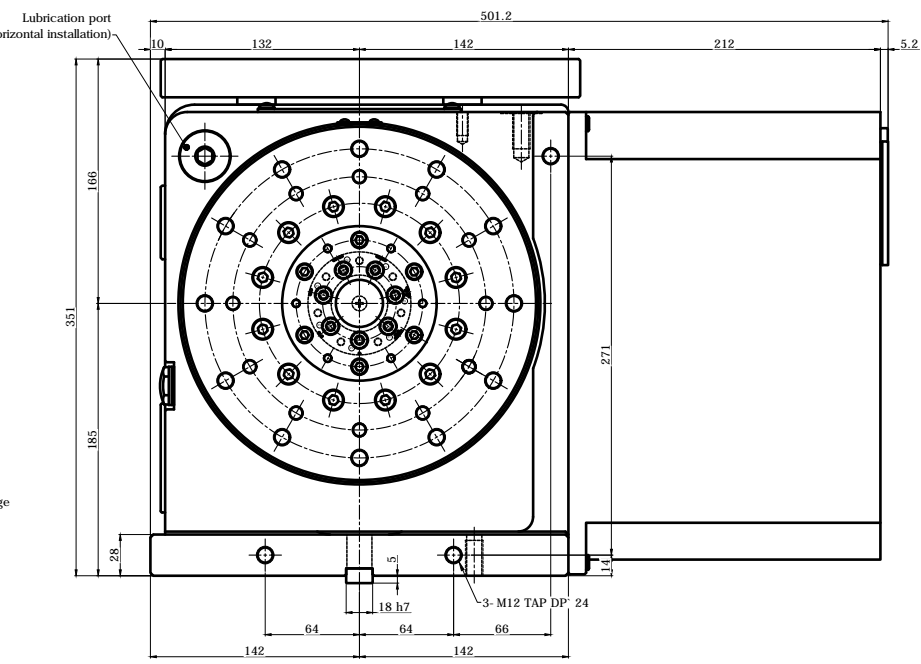
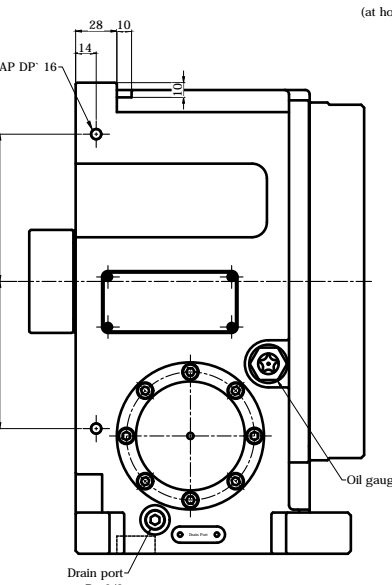
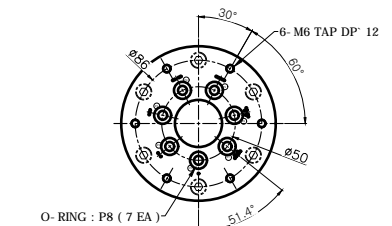
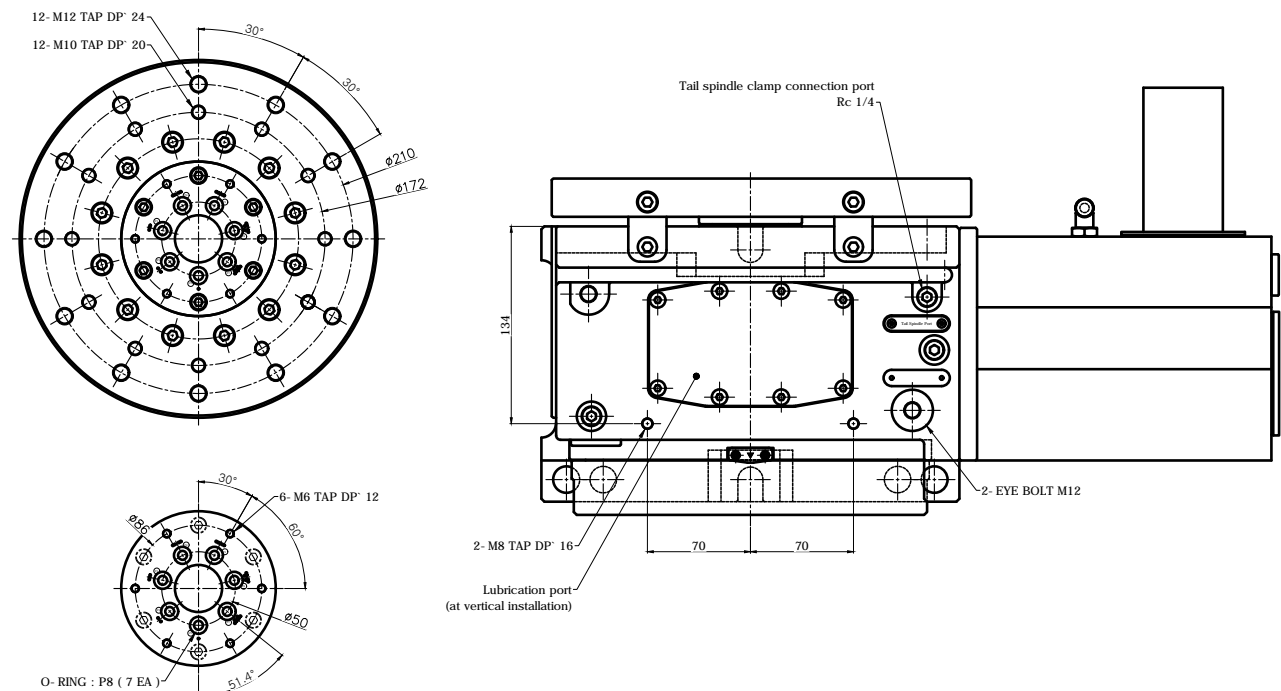


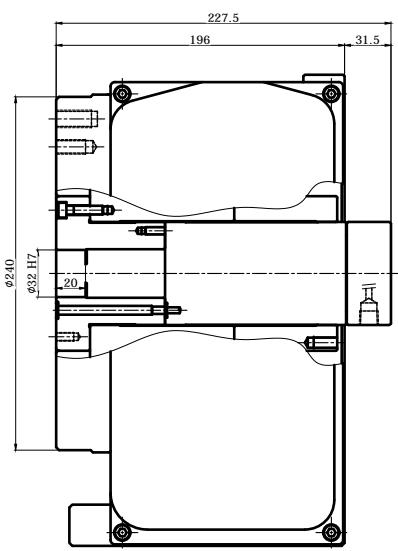
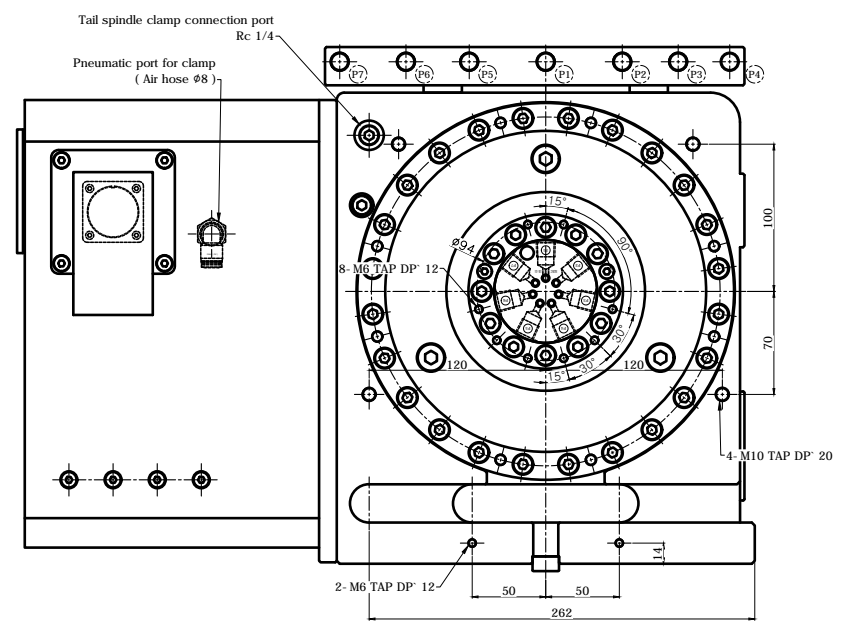
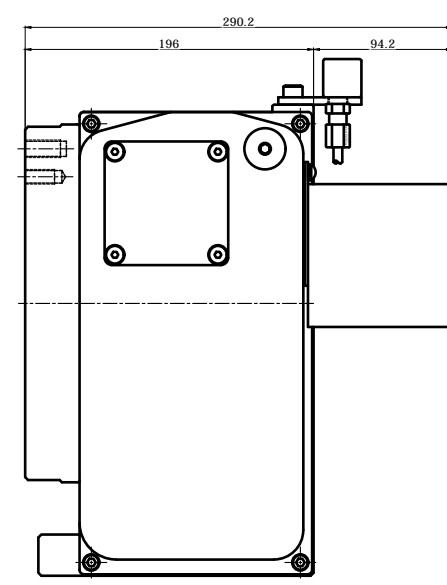
기호	변경 사항	날짜	수정 승인
△			

Vertical (수직형) Type

< 7- Port Rotary Joint >

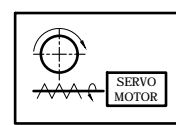
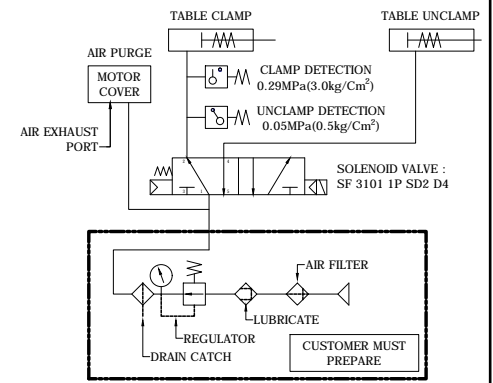


[A Type] ACLAMPING PARTS ACCESSORY 2 PAIR [B Type] ACLAMPING PARTS ACCESSORY 2 PAIR



SPECIFICATION	
테이블 직경 Table Diameter	φ240 mm
센터 높이 Center Height	185 mm
기준경 Reference Diameter	φ32 H7
스핀들 직경 Spindle Through Hole Diameter	-
클램프 방식 Clamp Method	Pneumatic 5 ~ 7 kgf/cm ²
클램프 모멘트 Allowable Work Inertia	3.12 kg·m ²
클램프 토크 Clamp Torque	-
회전 속도 Max. Spindle Speed	50 min ⁻¹ (MAXIMUM MAX. 2000 min ⁻¹)
기어비 Gear Ratio	1 / 60
무게 Weight	164 kg
기어 윤활 Gear Lubrication	ISO VG #150
허용하중 ALLOWABLE MASS OF WORK	125 kg [VER.]

[Rotary Joint Specifications]	
Temperature	MAX. 80°C
Hydraulic	MAX. 200 kgf/cm ²
RPM	MAX. 50 RPM
PORT	7 PORT



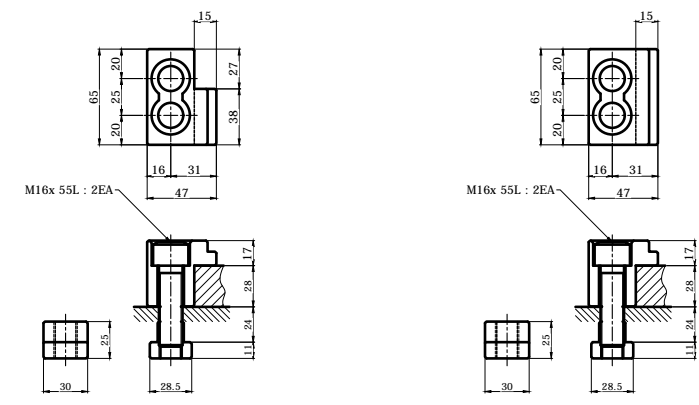
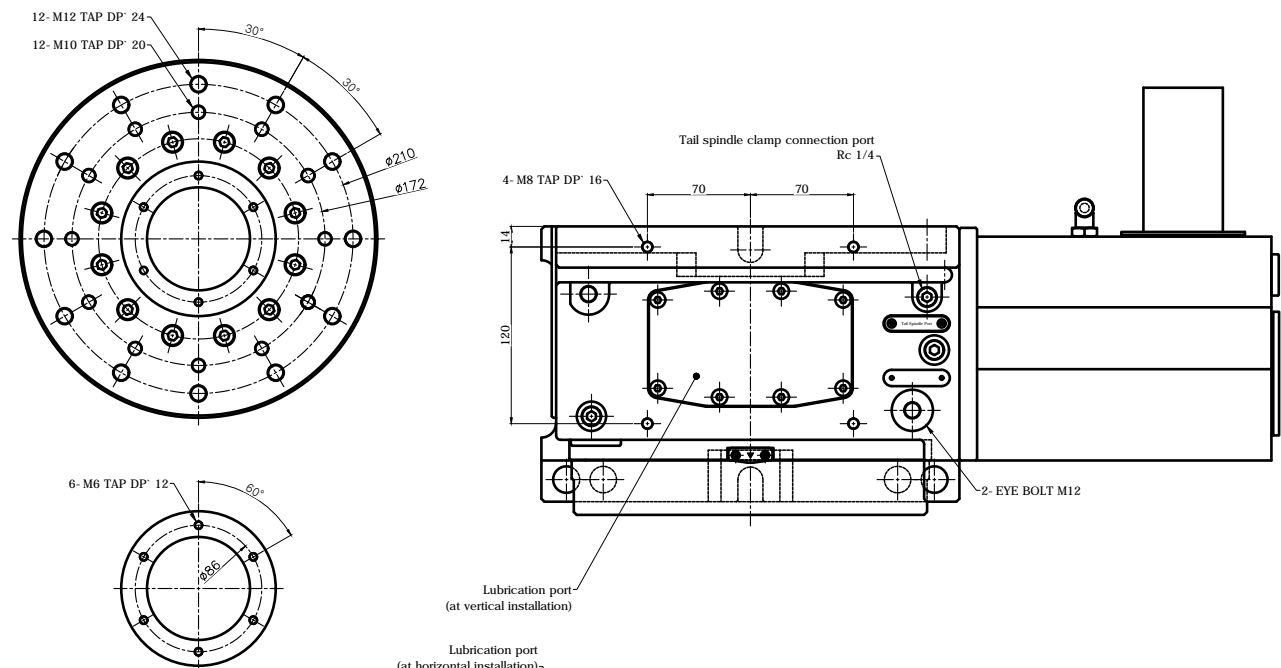
TITLE	RGC. Nc Rotary Table	PART NAME	외 형 도
DRG. NO.	RF-250YB-Rotary Joint	USER	-
CODE NO.	-	DEPARTMENT	Research & Development
		DATE	2020. 09. 01
SCALE	1 : 1	Approved	Checked
		Designed	



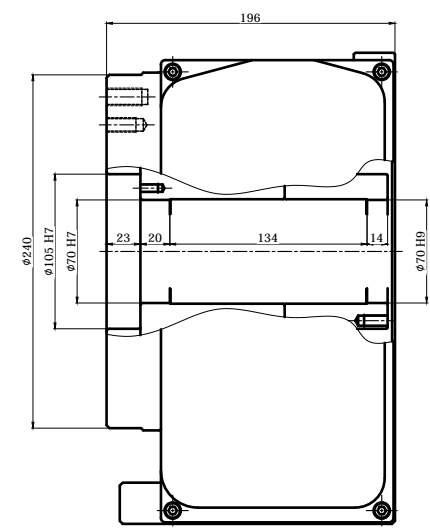
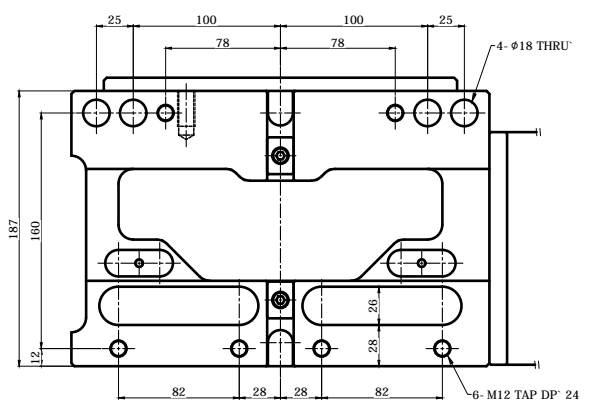
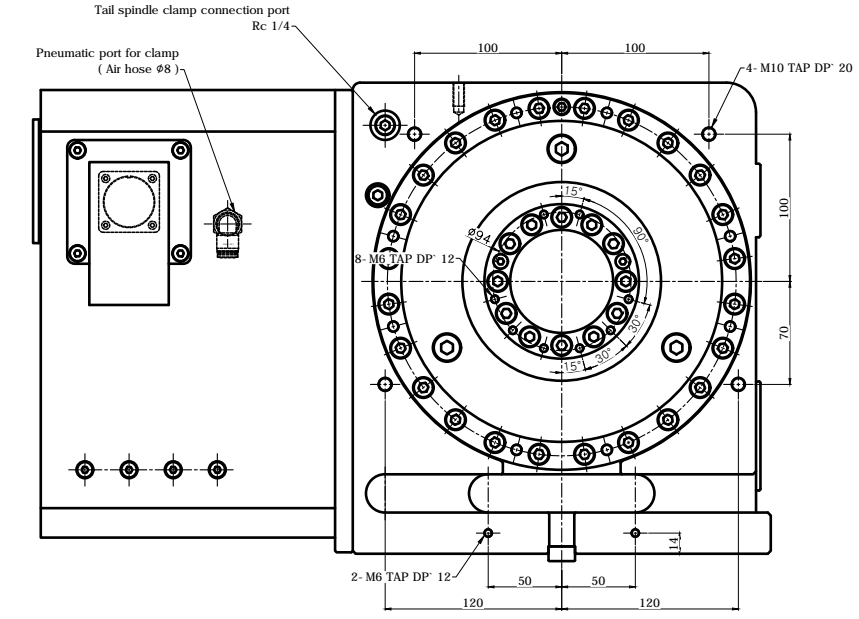
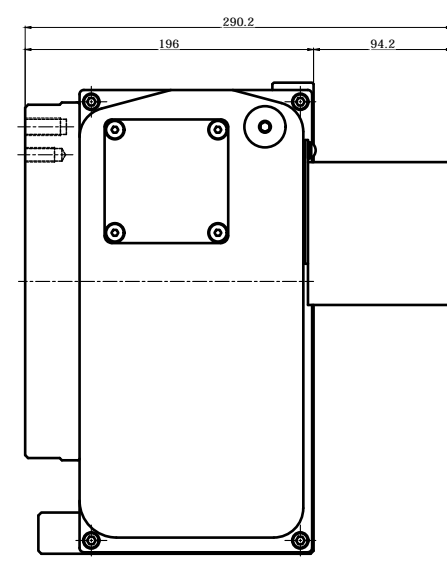
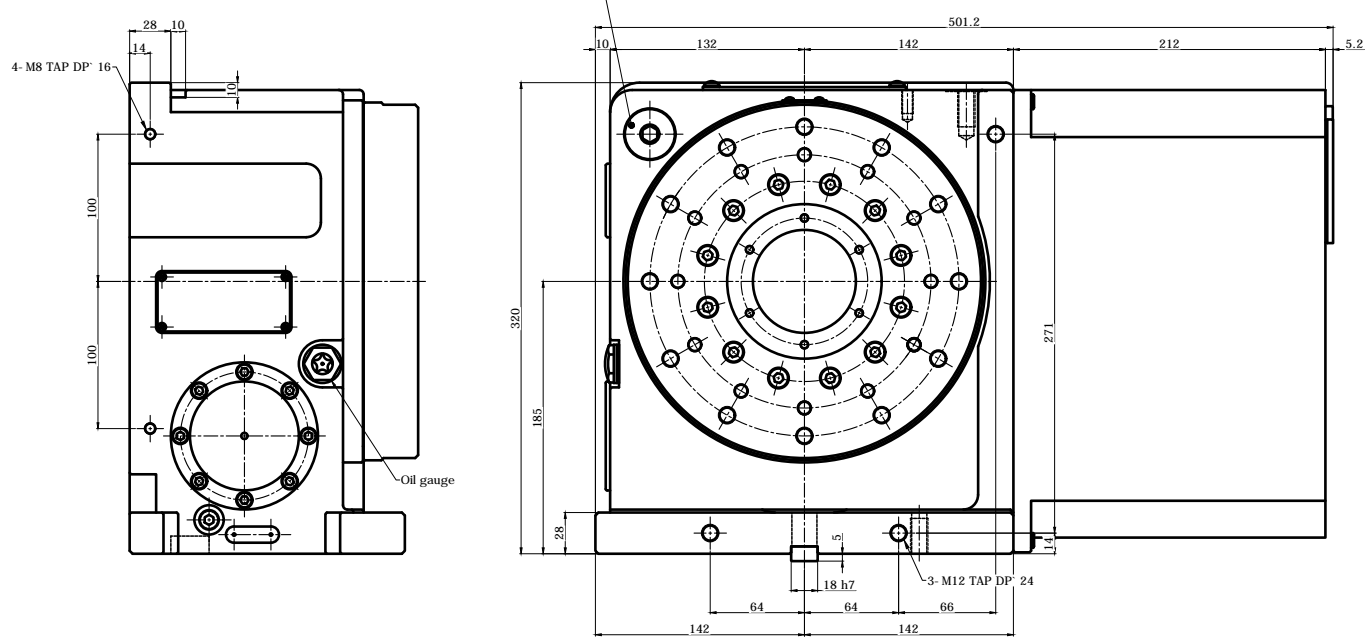
기호	변경 사항	날짜	수정 승인
△			

Vertical (수직형) Type

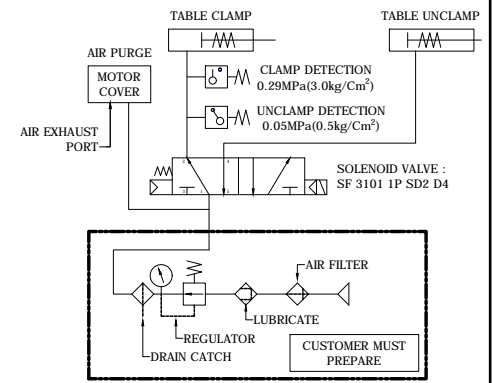
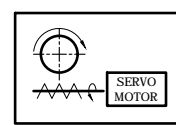
< Rotary Joint 미 적용 >



[A Type] ACLAMPING PARTS ACCESSORY 2 PAIR [B Type] ACLAMPING PARTS ACCESSORY 2 PAIR



SPECIFICATION	
테이블 직경 Table Diameter	Ø240 mm
센터 높이 Center Height	185 mm
테이블 내경 Table Inner Diameter	Ø105 H7
관통경 Spindle Through Hole Diameter	Ø70 H7
클램프 방식 Clamp Method	Pneumatic 5 ~ 7 kgf/cm ²
관성 모멘트 Allowable Work Inertia	3.12 kg·m ²
클램프 토크 Clamp Torque	-
회전 속도 Max. Spindle Speed	50 min ⁻¹ (MAXIMUM MAX. 2000 min ⁻¹)
기어비 Gear Ratio	1 / 60
무게 Weight	160 kg
기어 윤활 Gear Lubrication	ISO VG #150
허용하중 ALLOWABLE MASS OF WORK	125 kg [VER.]

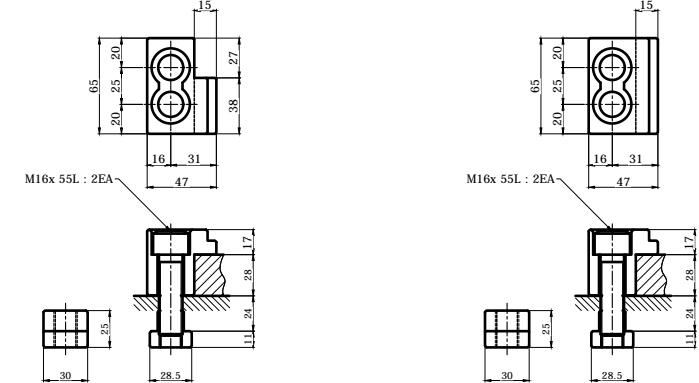
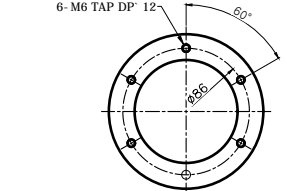
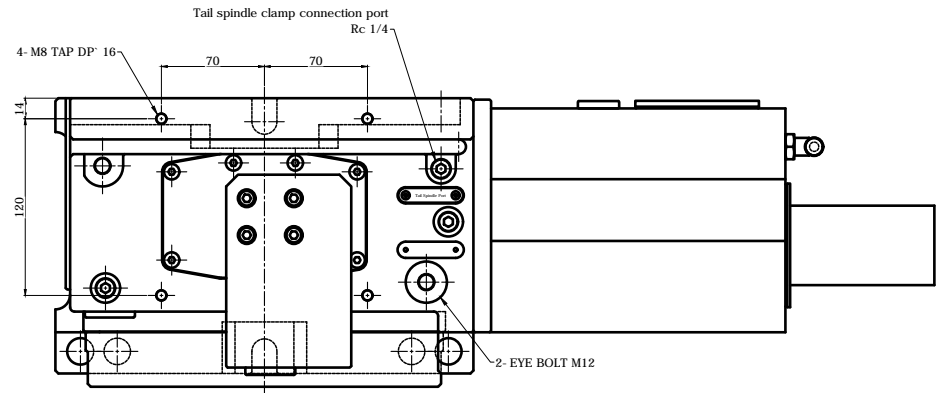
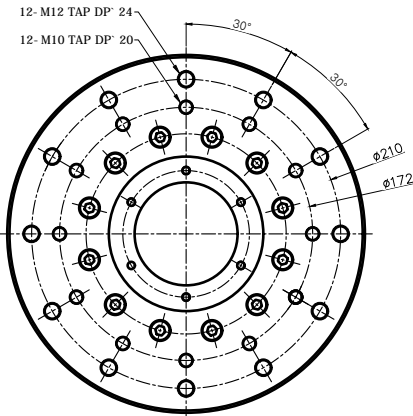


TITLE	RGC. Nc Rotary Table	PART NAME	외 형 도
DRG. NO.	RF-250Y8	USER	-
CODE NO.	-	DEPARTMENT	Research & Development
		DATE	2020. 09. 01
SCALE	1 : 1	Approved	Checked
		Designed	

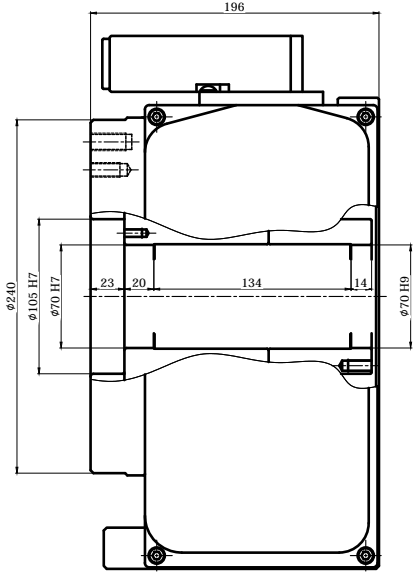
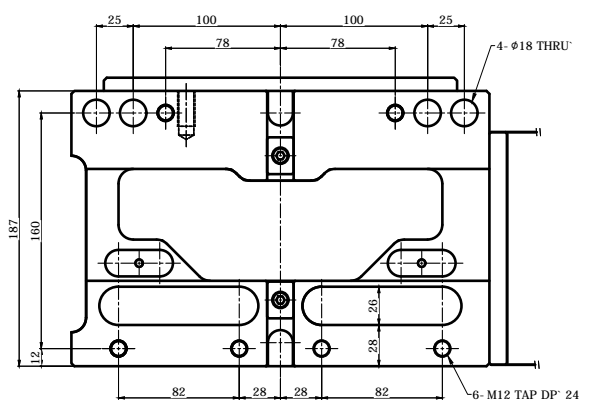
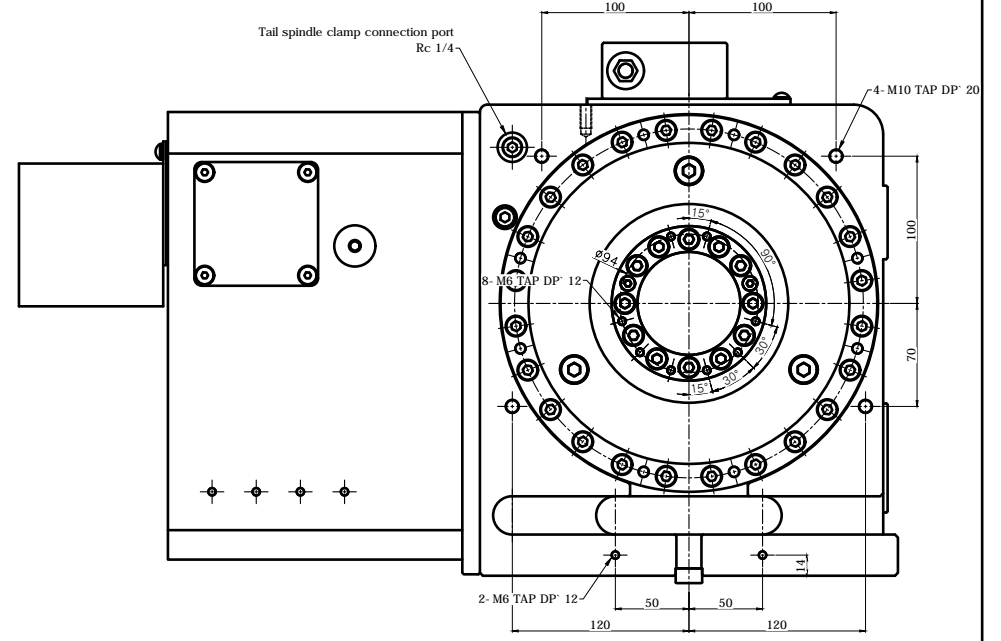
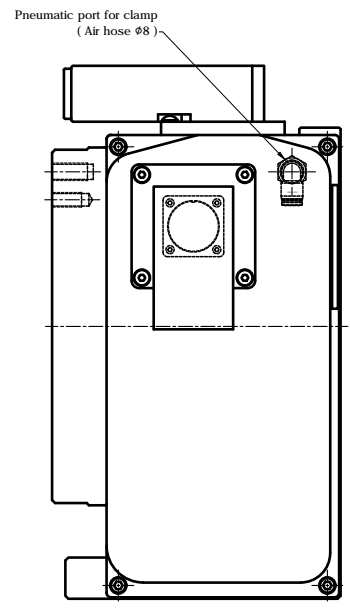
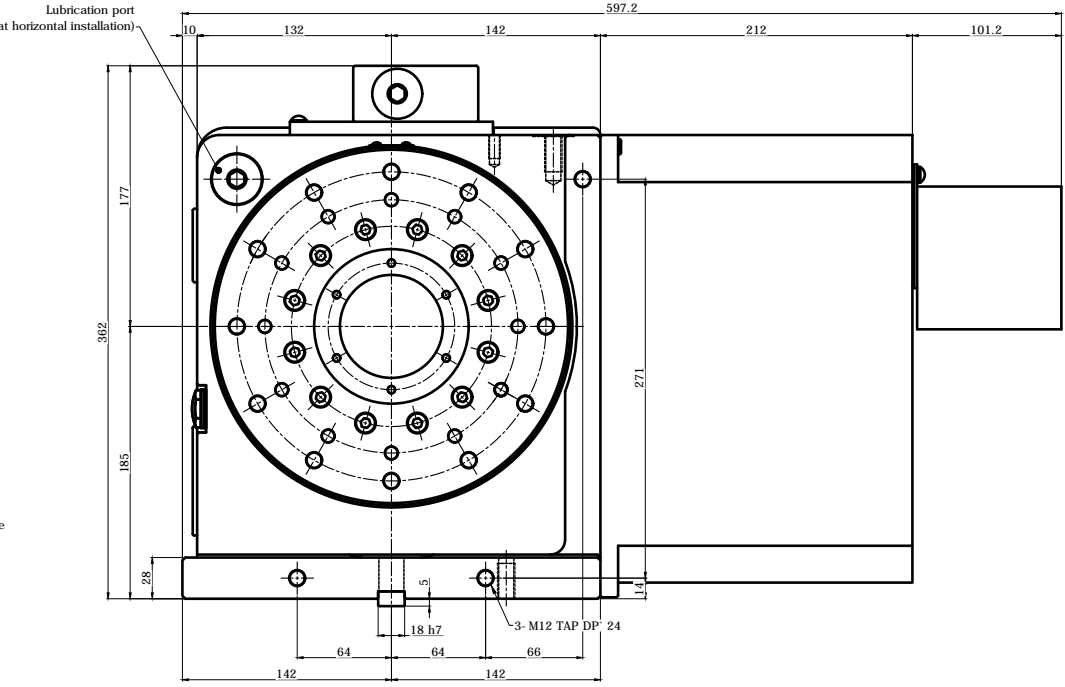
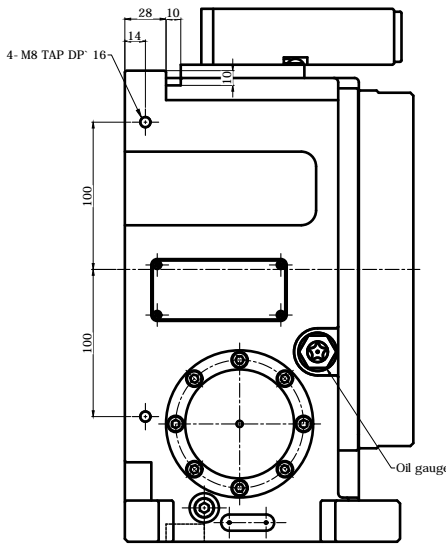


기호	변경 사항	날짜	수정 승인
△	변경 내용		
△			

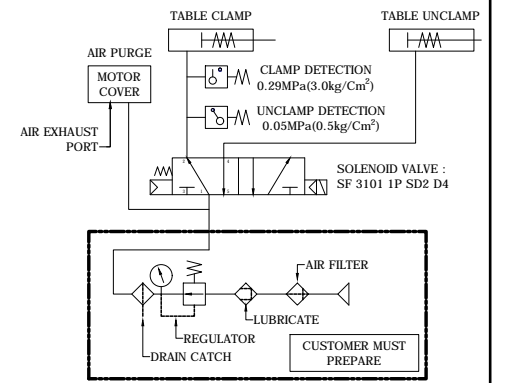
Horizontal (수평형) Type



[A Type] ACLAMPING PARTS ACCESSORY 2 PAIR [B Type] ACLAMPING PARTS ACCESSORY 2 PAIR



SPECIFICATION	
테이블 직경 Table Diameter	240 mm
센터 높이 Center Height	185 mm
테이블 내경 Table Inner Diameter	105 H7
스핀들 직경 Spindle Through Hole Diameter	-
클램프 방식 Clamp Method	Pneumatic 5 - 7 kgf/cm ²
허용 모멘트 Allowable Work Inertia	3.12 kg·m ²
클램프 토크 Clamp Torque	-
회전 속도 Max. Spindle Speed	50 min ⁻¹ (1800 max. rpm)
기어비 Gear Ratio	1 / 60
무게 Weight	160 kg
기어 윤활 Gear Lubrication	ISO VG #150
허용하중 ALLOWABLE MASS OF WORK	250 kg [HOR.]



TITLE	RGC. Nc Rotary Table	PART NAME	외 형 도
DRG. NO.	RF-250Y8-Horizontal	USER	-
CODE NO.	-	DEPARTMENT	Research & Development
DATE	2020.09.01		
SCALE	1:1	Approved	Checked
		Designed	

